



NARFE PRAISES SENATE SCRUTINY OF THE GPO-WEP(from <http://narfe.org>)

Margaret L. Baptiste, president of the National Active and Retired Federal Employees Association (NARFE), today lauded Senator John Kerry (D-MA) for holding a hearing to examine the Government Pension Offset (GPO) and the Windfall Elimination Provision (WEP) of the Social Security Act, that deny federal retirees and other public servants their earned Social Security benefits. Speaking at a press conference on Capitol Hill, Baptiste reiterated her association's long-standing opposition to the offsets. "Senator Kerry deserves our thanks for using his position as the Chairman of the Social Security, Pensions, and Family Policy Subcommittee to review policies undermining the earned retirement benefits of more than a million public servants," declared Baptiste.

Since 1983 the GPO has prevented retirees from collecting both their federal annuity and any Social Security benefit based on their spouse's work. Two-thirds of the amount of the earned civil service retirement is used to offset whatever Social Security spousal or survivor benefits that might otherwise have been payable. The WEP reduces the earned Social Security benefit of a federal worker who also receives a government annuity based on his/her own work. Hundreds of thousands of federal civil servants and other public retirees lose as much as half of their own earned social security income as a result of the WEP, and many annuitants are affected by both offsets. Baptiste called the GPO and WEP "unfair and unconscionable."

Recent data indicates approximately 401,200 Social Security beneficiaries affected by the GPO, of whom about 75 percent were women, approximately 42 percent were widowed, and 85% had lost their entire Social Security benefit. The

(continued on next page)

**N ational
A ctive
R etired
F ederal
E mployees**

**CHAPTER 860
Cleveland, TN 37312
December 2007**

REMEMBER! Next Chapter Meeting

WHAT? Holidays Celebration Dinner w/short meeting and entertainment afterwards

WHEN? December 13, 2007 - Thurs @ 6:30 PM

WHERE? Oliver's Restaurant, 3870 Keith St NW, Cleveland

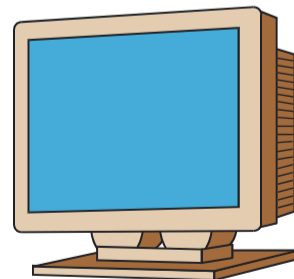
DETAILS: We will be ordering from a menu of 5 choices (such as beef, chicken, pasta, etc.) with prices ranging from around \$11 to \$16 per person. Tip will be automatically figured in each person's total.

We will also be taking contributions for Alzheimers and contributions of canned goods for the local food bank.

NEW LOCAL NARFE OFFICERS TO BE INSTALLED

During our meeting on December 13, our new President, Dean McAlister, and new Vice President, Don Ledford, will be installed. Helen Evans will return as Treasurer. Other offices have not yet been decided on. If anyone would be interested in the office of Secretary for this term, please contact Danny Britt.

+++++



Basic information about the Cleveland Chapter of NARFE can be viewed online at

www.narfeclevelandtn.org.

Access to our newsletter will be posted there also.

**A MESSAGE FROM OUR
PRESIDENT DANNY BRITT**

This year we will again be taking contributions for Alzheimers. Please remember the recent letter you should have received about the Bradley Healthcare and Rehabilitation Center Alzheimer's Unit garden project. If you would like to contribute to this project, please make your check payable to BHRC Alzheimer's Unit. If you want to contribute to the national research drive, make your check payable to NARFE-Alzheimer's Research. If you cannot attend our December Holiday Dinner/Meeting, please mail your contribution to Helen Evans, #2002, 3600 Keith St. NW, Cleveland, TN 37312. Please feel free to call me at 423-478-2837 if you need more information.

GPO and WEP (continued from 1)
data also showed roughly 971,300 Social Security beneficiaries affected by the WEP, about two-thirds were men, and 20% of affected individuals had paid into Social Security for at least 21 years. NARFE has long led a campaign to rid the Social Security Law of the GPO and WEP provisions. The association chairs the Coalition to Assure Retirement Equity (CARE), comprised of over 40 national organizations representing public sector retirees that support changes in the GPO and WEP. "For far too long the GPO and WEP have devastated the income security of many former federal workers," said Baptiste. "It is time for Congress to act to rid the law of these discriminatory provisions," she asserted.

NARFE - CHAPTER 860
Betsy Deacon, Editor
192 Doe Run NE
Charleston, TN 37310

**HEALTH INSURANCE OPEN
SEASON**

Remember Open Season for the Federal Employees Health Benefits Program (FEHBP) and the Federal Dental and Vision Insurance Program (FEDVIP) ends 12/10/07. For more information, go to <http://www.opm.gov/retire/fehb> or call 1-800-332-9798.

#####

COLA Update

Millions of retired Americans receiving federal civilian and military retirement, as well as Social Security, will receive a cost-of-living adjustment (COLA) in their January 2008 retirement checks. CSRS retirees and Social Security recipients will receive a 2.3 percent adjustment, and FERS retirees over 62 will receive a 2.0 percent COLA along with a 2.3 percent hike in their Social Security payments.

CHAPTER 860 OFFICERS

- President - Danny Britt*
- Vice-President - Dean McAlister*
- Secretary - Joan Burner*
- Treas/Programs - Helen Evans*
- Service Officer - Don Rollens*
- Legislative - Maxine Eaves*
- Sunshine - Ruth Hale*
- Membership Chair - Jim Burner*

**SPECIAL THANKS TO BANK
OF CLEVELAND (WHERE WE
HAVE OUR ACCOUNT) FOR
PROVIDING PRINTING
SUPPORT**