



FROM THE NARFE NATIONAL WEBSITE, www.narfe.org

SOUTH CAROLINA WOMAN ELECTED NATIONAL PRESIDENT OF NATIONAL FEDERAL EMPLOYEE/RETIREE ASSOCIATION

SEPTEMBER 13, 2006

Margaret L. Baptiste of Mount Pleasant, South Carolina has been elected National President of the National Active and Retired Federal Employees Association (NARFE). She was elected today at NARFE's 29th Biennial National Convention, held this week in Albuquerque. Ms. Baptiste garnered 3,451 votes (53.2% of the votes cast) to defeat NARFE National Vice President Dr. Dan C. Galvan of Temple, Texas, 2,827 votes, and Former NARFE National President Charles W. Carter of Lakewood, Colorado, 250 votes. She takes office November 1, 2006, succeeding Charles L. Fallis of Salem, Virginia, who was from seeking re-election. She is the first woman to be elected National President of NARFE and the first spouse of a federal retiree to hold the position.

NEW FEDERAL EMPLOYEES DENTAL AND VISION INSURANCE PROGRAM

The new Federal Employees Dental and Vision Insurance Program (FEDVIP) will be available to eligible Federal and Postal employees, retirees, and their eligible family members on an enrollee-pay-all basis. This new Program allows dental and vision insurance to be purchased on a group basis which means competitive premiums and no pre-existing condition limitations. Premiums for enrolled Federal and Postal employees will be withheld from salary on a pre-tax basis.

Enrollment will take place during the upcoming FEHB open season Monday, November 13 through Monday, December 11, 2006. Coverage will be effective December 31, 2006.

N ational
A ctive
R etired
F ederal
E mployees

CHAPTER 860

Cleveland, TN 37312 Fall 2006

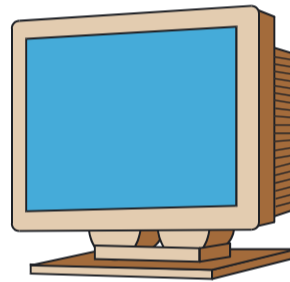
REMEMBER! Next Chapter Meeting...

WHAT? Covered Dish & Meeting

WHEN? October 12 - Thurs @ 6:30 PM

WHERE? St. Terese's Catholic Church

SPEAKER ON LOCAL PARKS AND RECREATION



VISIT OUR NEW WEBSITE AT www.narfeclevelandtn.org. Our newsletters will be posted there also.

NARFE CONVENTION RESULTS

1. Resolution to revise the mandatory chapter membership was defeated. However, a vote passed to ban the word "mandatory" from all Narfe writings and discussions and replace it with the word "automatic".

2. The issue on "one man, one vote" was sent to committe for study.

Many additional issues and resolutions were discussed and voted on during the meeting. Information on the proceedings are posted on the National Narfe Website at www.narfe.org.

VOTERS INFORMATION

This year Tennessee will be voting for the following offices: Governor, U.S. Senate, U.S. House of Representatives, State Senate, State Representatives (in Bradley County this will be 22nd and 24th Districts)

Early voting will be 10/18 thru 11/2

Election Day is 11/7

Take a look at the centerfold of the Oct. NARFE magazine for information on how members of Congress have supported and voted on important NARFE issues.

MESSAGE FROM THE NEW NEWSLETTER EDITOR:

I would like to take this opportunity to ask our members to please feel free to make contributions and suggestions for the newsletter. I need all the help I can get.

We would like to start sending the newsletter to as many members as possible by email. We spend close to \$150.00 a year for stamps. Savings from email means we could put that money to better use. Anyone who is interested in receiving the newsletter thru email can give me their email address at the meeting, or by emailing me at dogcomp@bellsouth.net, or calling me at 336-3879.



QUOTABLE QUOTES

"When friends walk together, no mountain is too steep. No valley is too deep. No wall too high to leap. No promises too hard to keep." Unknown

SPECIAL THANKS TO BANK OF CLEVELAND (WHERE WE HAVE OUR ACCOUNT) FOR PROVIDING PRINTING SUPPORT

NARFE - CHAPTER 860
B.Deacon, Editor
192 Doe Run NE
Charleston, TN 37310

**From FEDweek Weekly Issue:
Wednesday, September 27, 2006**

COLA Count Comes Down to Wire
With one month left in the counting period for the January 2007 federal retiree COLA, the figure stands at 3.6 percent, following an increase of 0.2 percentage points in August in the inflation index used to set the COLA. Those retired under the CSRS system would get the full adjustment while those retired under FERS and who are eligible for COLAs would get one percentage point less.

CHAPTER 860 OFFICERS

President - Danny Britt
Vice-President - Dean McAlister
Secretary - Joan Burner
Treas/Programs - Helen Evans
Service Officer - Don Rollens
Legislative - Maxine Eaves
Sunshine - Ruth Hale
Membership Chair - Jim Burner

(Please forgive me for names spelled incorrectly in the last newsletter. I hope I got everyone correct this time)

