



**HOLIDAY DINNER**  
**CLEVELAND CHAPTER**

Come celebrate the Holidays with our annual dinner on December 14, 6:30 PM at the Golden Corral Restaurant in Cleveland. Members and guests should get in the Cashier line as usual, then tell Cashier they are with the NARFE group. We will receive a discount. Price will be approximately \$8.00 + drink + \$1.00 tip + tax. Proceed thru buffet line or to Meeting Room at the front left of the restaurant. We will not be exchanging gifts. However, we will take canned donations for the Food Bank and monetary donations for the NARFE Alzheimers Fund.



\*\*\*\*\*

**DON'T FORGET OPEN SEASON FOR HEALTH PLANS**

FEHB Open Season ends Monday December 11. This will also be the deadline for enrollment in the new FEDVIP Vision and Dental Plans.

Information for FEHB can be obtained by going online to [www.opm.gov/retire/fehb](http://www.opm.gov/retire/fehb) or call 1-800-332-9798

Information for FEDVIP can be obtained by going online to [www.opm.gov/omsire/dentalvision](http://www.opm.gov/omsire/dentalvision) or call 1-800-332-9798. Enrollment for FEDVIP can be completed at [www.BENEFEDS.com](http://www.BENEFEDS.com) or by calling 1-877-888-3337.

For Medicare Prescription Drug Plan information, visit [www.medicare.gov](http://www.medicare.gov) or call 1-800-633-4227

N ational  
A ctive  
R etired  
F ederal  
E mployees

**CHAPTER 860**

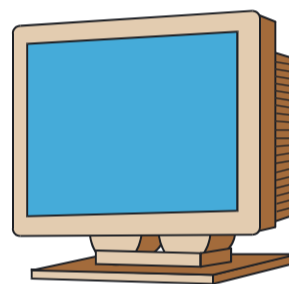
Cleveland, TN 37312    December 2006

REMEMBER! Next Chapter Meeting

WHAT? Holiday Dinner

WHEN? December 14 - Thurs @ 6:30 PM

WHERE? Golden Corral Restaurant



VISIT OUR NEW WEBSITE AT [www.narfeclevelandtn.org](http://www.narfeclevelandtn.org). Our newsletters will be posted there also.

**A MESSAGE FROM OUR PRESIDENT DANNY BRITT**

As we have in the past, we will again take up a collection for Alzheimers at our Christmas dinner meeting this year. I'm sincerely asking that we all reach deep into our pockets to give for this cause this year.

Here are some facts about Alzheimers: Scientists think that as many as 4.5 million Americans suffer from AD. The disease usually begins after age 60, and risk goes up with age. While younger people also may get AD, it is much less common. About 5 percent of men and women ages 65 to 74 have AD, and nearly half of those age 85 and older may have the disease. It is important to note, however, that AD is not a normal part of aging. Although scientists are learning more every day, right now they still do not know what causes AD, and there is no cure.

Most likely each of us has known or known of at least one person who has had this disease. As we get older, it may even strike much closer to home, if it hasn't already. Let's do what we can to try to prevent this from happening.

And if you can't make it to our Christmas dinner meeting this year, please still help this important cause by sending a contribution to our Alzheimers Chairman, Elbert Schrader at 1125 Harvest Glen Drive NW, Cleveland, TN 37312.

Your contribution to the NARFE Alzheimers Fund all goes to research to help find a cure.

\*\*\*\*\*

IF YOU HAVE ANY SUGGESTIONS OR IDEAS FOR OUR NEWSLETTER, PLEASE LET ME KNOW. YOU CAN CONTACT ME, BETSY DEACON, AT [dogcomp@bellsouth.net](mailto:dogcomp@bellsouth.net) OR CALL ME AT 336-3879

IF YOU WOULD LIKE TO RECEIVE OUR NEWSLETTER BY EMAIL INSTEAD OF GETTING A HARD COPY THRU THE U.S. POST OFFICE, LET ME KNOW. THIS WILL SAVE OUR CHAPTER THE COST OF POSTAGE. SEVERAL PEOPLE HAVE ALREADY SIGNED UP FOR EMAIL COPIES.

#####

FROM THE NARFE NATIONAL WEBSITE, [WWW.NARFE.ORG](http://WWW.NARFE.ORG)

**Which is the Real Deal?**

The Office of Personnel Management has contracted with 10 plans (7 dental plans and 3 vision plans) to provide comprehensive dental or vision services to Federal and USPS employees, annuitants, compensationers, and survivor annuitants under the new Federal Employees Dental and Vision Insurance Program (FEDVIP). Enrollment will take place exclusively through BENEFEDS at [www.BENEFEDS.com](http://www.BENEFEDS.com) or by telephone at 1-877-888-3337.

Enrollment in FEDVIP does NOT take place directly with an insurance plan. There are plans not affiliated with FEDVIP that have designed their programs and websites to strongly resemble and sound like FEDVIP. They are not part of FEDVIP. Their enrollment will be directly with an insurance plan, not at the sites above.

These plans are contacting employees and annuitants requesting credit card/banking information to enroll in their plans. Although they state tax advantages for employees, FEDVIP is the only government wide program that provides employees with premium conversion.

The official FEDVIP dental plans are Aetna, GEHA, MetLife, United Concordia, Triple-S, GHI and CompBenefits. The vision plans are Blue Cross-Blue Shield, Spectera, and VSP. These plans are obtained on the above Web site or at the above telephone number, not directly from an insurance company.

#####

**CHAPTER 860 OFFICERS**

- President - Danny Britt
- Vice-President - Dean McAlister
- Secretary - Joan Burner
- Treas/Programs - Helen Evans
- Service Officer - Don Rollens
- Legislative - Maxine Eaves
- Sunshine - Ruth Hale
- Membership Chair - Jim Burner

**SPECIAL THANKS TO BANK OF CLEVELAND (WHERE WE HAVE OUR ACCOUNT) FOR PROVIDING PRINTING SUPPORT**

NARFE - Chapter 860  
Betsy Deacon, Editor  
192 Doe Run NE  
Charleston, TN 37310

